



Fielding Road, London, W4 1HL

£1,450,000

WHITMAN & CO.

SALES · LETTINGS · COMMERCIAL

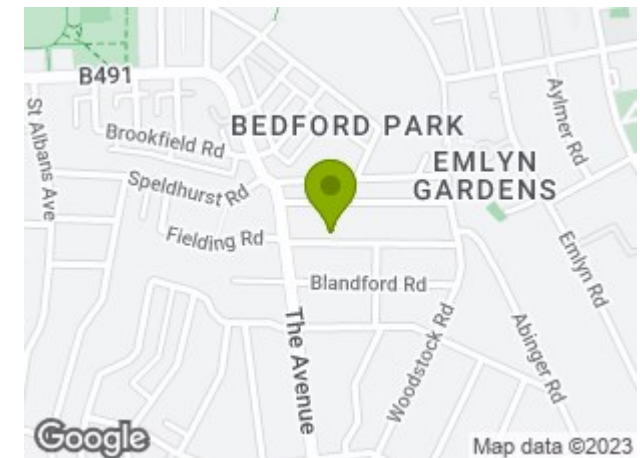
- Bedford Park
- Immaculately presented
- No chain
- Four double bedrooms
- 27' Landscaped garden
- Bespoke kitchen/breakfast room

Tenure - Freehold
Local Authority - Ealing
Council Tax - Band G

THE PROPERTY

An immaculately presented four bedroom period family house offering an excellent balance of living and entertaining space in this tree-lined residential road offering close proximity to numerous amenities. This superb family house offers a master bedroom with a luxury ensuite shower room, three further double bedrooms, a family bathroom, a double reception room, a cloakroom, a 17' bespoke kitchen/ breakfast room with French doors onto a 27' private landscaped garden. Ideally situated in the Bedford Park area offering easy access to Turnham Green tube station and the extensive shops, bars and restaurants on Chiswick High Road. No chain.

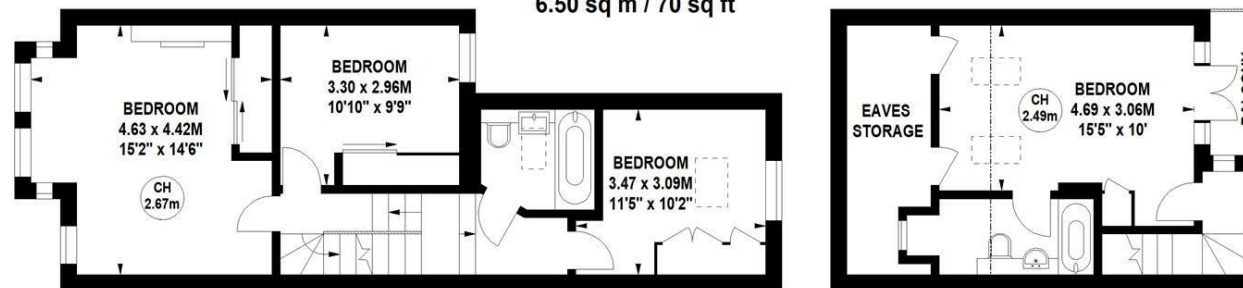
SITUATION



Fielding Road, W4

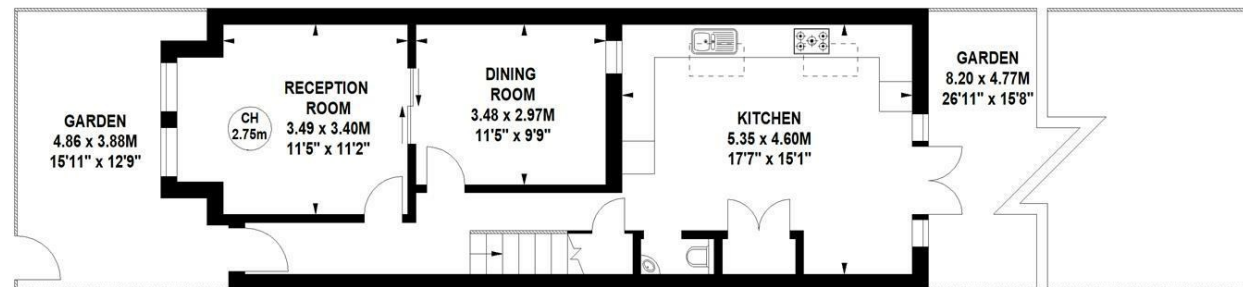
Approximate gross internal area
142.79 sq m / 1537 sq ft
(Including Eaves Storage)
Eaves Storage
6.50 sq m / 70 sq ft

Key :
CH - Ceiling Height



First Floor

Second Floor



Ground Floor

Not to scale, for guidance only and must not be relied upon as a statement of fact.
All measurements and areas are approximate only

5-7 Turnham Green Terrace, Chiswick, London, W4 1RG

Tel 020 8747 8800

E-mail sales@whitmanandco.com

Website www.whitmanandco.com